



INTERNATIONAL NATIONAL TRUSTS ORGANISATION

Sustainable Farms

Introduction

Farmers today are under pressure to meet the demands of a rapidly growing global population whilst operating in increasingly challenging environmental conditions. It is more important than ever to ensure both food security and environmental sustainability not only for our generation, but generations to come. To achieve food security whilst safeguarding ecosystem stability, there must be a widely shared appreciation of agriculture as a multifunctional strategic land use that can provide: nutritious food, rural development and employment, environmental management, and the sustaining of cultural heritage of agrarian communities.

The members of the International National Trusts Organization (INTO) own and manage many farming properties across the globe helping to sustain the rural communities within which they are located. For instance NTEWNI is the largest farmer by land area in the UK. INTO encourages and supports the conservation and preservation of natural resources, heritage breeds and heirloom species, heritage farming structures, traditional rural landscapes, and the use of traditional farming and cultural practices.

This proposal outlines the development by INTO of a new focused program, one that closely ties into the values and visions of the organization underpinned by a respect for cultural sustainability. It will be used to deliver knowledge and transfer best practices for achieving sustainable agriculture amongst National Trust farms and the wider community.

The proposal

The proposal is that INTO establishes a new program called INTO Sustainable Farms (name subject to change), which brings together National Trust farming properties across the globe. This project will provide an easily accessible list of all National Trust farm properties, details of current projects being undertaken, sustainable agricultural management practices that have been adopted, and conservation practices intent on preserving rural heritage including built structures and traditional knowledge.

By exchanging knowledge through INTO Sustainable Farms, other National Trust farms and the wider community will learn about food and fibre production whilst concurrently supporting the conservation of natural and heritage resources.

Description of activities

If the proposal is supported, INTO will establish a new tab on its INTO website titled INTO Sustainable Farms. This link will provide a pathway for viewers to browse through profiles of National Trust farm properties. The farm profiles will provide an overview of the history of the farm, biophysical and cultural resources, and related infrastructure, business operations, management practices and long-term goals. The information will be accompanied by photographs and maps. The website will be regularly updated on current projects that farms are undertaking as well as interesting stories from these properties.

Website sections

About

Why INTO Sustainable Farms was established, what it hopes to achieve, who is involved, where the farms are located, values and visions for these farms, and mission statement.

Our Farms

Following this link provides viewers with information on the farms. Includes;

- **Interactive Map** of the world, with placement of individual farms pinpointed. Clicking on a pinpoint will take the viewer straight to that farm profile.
- **Countries** involved and links to their farms. Includes brief overview of agriculture in that country. E.g. clicking on “Australia” will bring up an overview of agriculture in Australia, and provide a list of all Australian National Trust farms. Clicking on a particular farm will take the viewer straight to that farm profile.
- **Industries** tab will give viewers further information on that particular industry and all farms that are involved with it. E.g. clicking on “Heritage Breeds” will give viewers information on types of heritage breeds, why it is important to maintain their genetic pool, and which farms around the globe have heritage breeds.
- **Sustainability Issues** will provide information on issues that affect the sustainability of farming. It will discuss which parts of the world are being most affected by these issues, and what agricultural industries are being impacted upon. Suggested issues include; climate change, food security, energy, urban migration, gender inequality, lack of education and skills, etc.
- **Heritage Conservation** will provide a brief description of farm heritage structures such as traditional barns, pioneer homesteads, early windmills etc. Clicking on a particular structure will link the viewer to all farms with those structures. Where the farms house early farming equipment the site will indicate whether there is an on-site museum and whether tool preservation is carried out and its use demonstrated.
- **Traditional Knowledge** will describe different types of traditional knowledge associated with farming, e.g. companion planting, times of harvesting. The focus will be on those National Trust farms where cultural knowledge is fostered, such as in India and many African countries.
- **Sustainable Actions** will provide positive information on what responses can be taken to combat issues of sustainability, and which National Trust farms are currently undertaking these. The purpose of this section is also to impart knowledge and ideas to other farm managers so that they too can further address sustainable agricultural practices, natural resource management and rural heritage conservation.

Current Projects

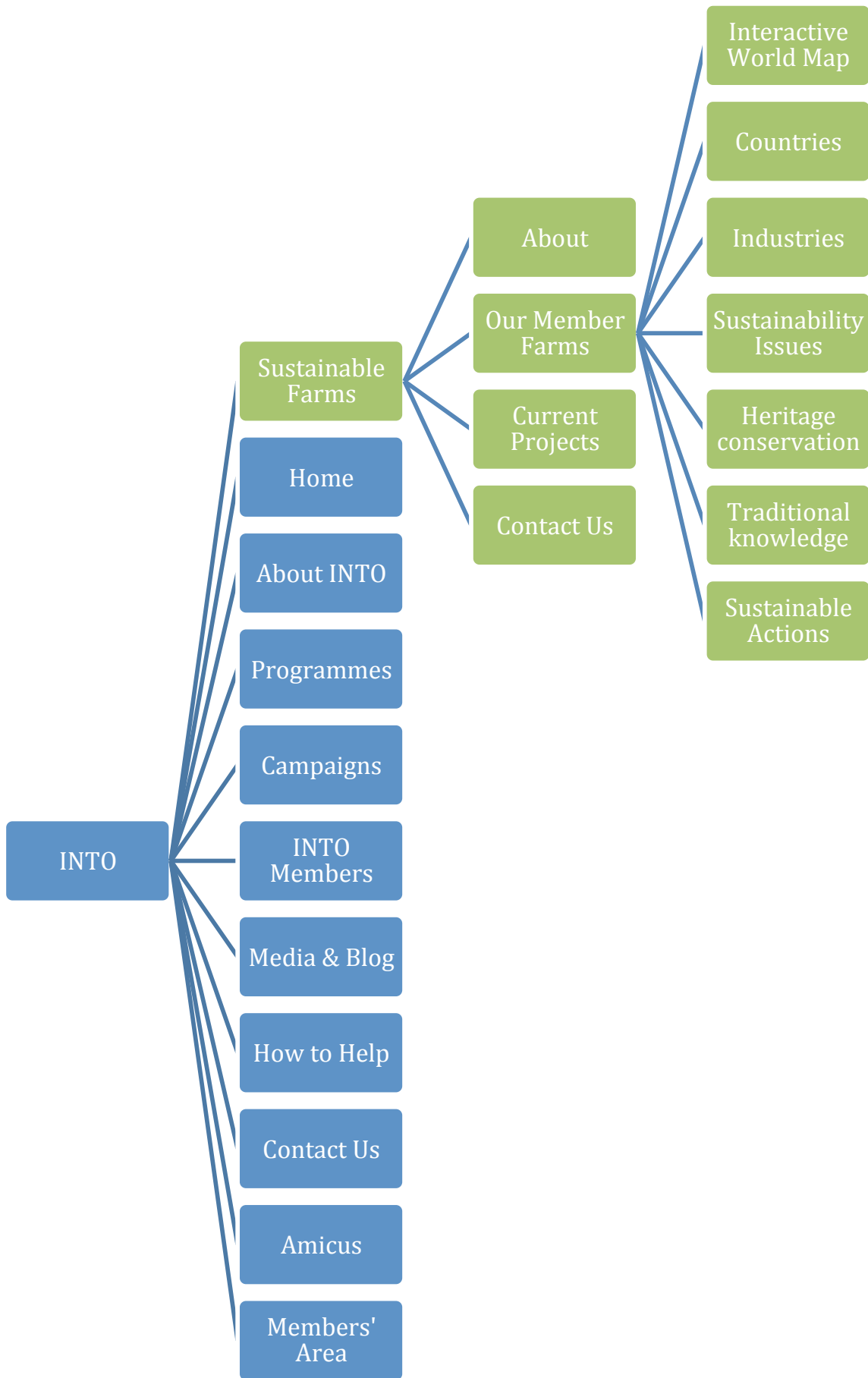
Details on current restoration and conservation projects being undertaken. May also include projects developing and implementing 'green' technologies or practices e.g. renewable energy projects such as solar and hydro schemes, water conservation and harvesting, soil carbon sequestration, recycling.

Contact Us

A link to get in contact with the INTO Sustainable Farms coordinator, National Trust farm managers and country specific National Trusts.

Please see Appendix A and Appendix B for sample website pages.

Website layout and structure



Work plan- the next steps

1. Present Proposal to the INTO Executive.
2. Discussion with INTO Executive and Secretariat on ideas/comments/concerns.
3. Email Chloe Hampson to set up liaison (coordinator of Fit for the Future, UK National Trust).
4. Work with INTO Web Master (Bill Turner) to design web page layout and inclusions.
5. Email National Trust organizations to obtain information on their National Trust farm properties. Draft email attached Appendix C.
6. Format and edit information on farm properties to fit the website purpose and layout.
7. Send draft farm profiles to INTO Secretariat.
8. Discussion with INTO Secretariat on ideas/comments/concerns.
9. Send information to INTO Web Master (Bill Turner) for upload.
10. Review and evaluate website, and adapt as necessary.
11. Maintain regular communication with National Trust farm managers, so information remains current.

Further ideas

- Farm of the month- spotlight on one farm and what they are up to, viewed on INTO Sustainable Farms home page.
- The use of social networking sites so information can be accessed and uploaded with ease and engage a larger audience.
 - Twitter account- #INTOFarms
 - Facebook account- INTO Sustainable Farms

Project coordinator

I am Anika Molesworth and I have a passion and personal interest in agriculture and sustainable land management practices. Based in Australia, I have spent my adult life living in rural locations, working in agribusiness, and undertaking tertiary studies in agriculture. I propose that I act as the global coordinator of INTO Sustainable Farms.

In brief, my qualifications/achievements include;

- Bachelor of Science, specializing in Agribusiness
- Masters of Sustainable Agriculture (in progress)
- Top 100 Women in Australian Agribusiness 2014
- Young Farming Champion, Art4Agriculture 2014
- Founder of the Climate Wise Agriculture social network

Links of interest

- Target 100- <http://www.target100.com.au>
This website offers 100 initiatives to deliver sustainable cattle and sheep farming in Australia by 2020. It provides profiles on farmers and their properties, and identifies sustainable initiatives they have adopted. The site gives information on issues facing farming (e.g. climate change, energy, soil and ground cover, etc.). It also provides easy

access to Twitter, Facebook and Youtube related pages. I propose INTO Sustainable Farms follow a similar thread.

- Fit for the Future, Chloe Hampson- <http://ntenvironmentalwork.net/network/>
Fit for the Future website networks individuals and organizations as part of 'greening' the NTEWNI Information is provided on current projects, events, and site visits that aim at reducing the National Trust's environmental footprint.

Conclusion

National Trust farms have stood the test of time, and so have the capacity to be the catalyst for imparting a wealth of knowledge and experience. Establishing INTO Sustainable Farms will provide a platform for easy online access to National Trust farms across the globe. It will network those involved with and interested in National Trust farms. The site will educate, inspire and encourage participation in sustainable agricultural practices and associated natural and cultural heritage resources for the benefit of all.

Welcome to INTO Sustainable Farms

The International National Trusts Organization (INTO) members own and manage rural farming properties across the globe. The organization encourages and supports the conservation of natural resources, the preservation of heritage breeds and heirloom species, and the use traditional farming and cultural practices.

Farm of the month

Sample Farm

National Trust of Australia
Australia

Sample Farm is located in far western New South Wales, and is owned and operated by the Australian National Trust.

In this semi-arid region the land is particularly fragile, and as such the sustainability of pastoralism depends upon careful rangeland management and an extensive understanding of the landscape ecology and livestock requirements.



Recent updates on Twitter

Tweets

 [INTO Sustainable Farms](#)

Lecuscim porehenis reiur, voloreium solupta tiatem restota int ium harcia si

 [INTO Sustainable Farms](#)

haribus exped mil id que niet fuga. Onsequo mod ut eatur?

Latest news on Facebook

 [INTO Sustainable Farms](#)

Que corectota is a quis arum eaquo to velesti ad et esectatia

 [INTO Sustainable Farms](#)

Lecuscim porehenis reiur, voloreium solupta tiatem restota int ium harcia si

 [INTO Sustainable Farms](#)

Erferum fuga. Itatiberum vendaerum haribus exped mil id que niet fuga. Onsequo mod ut eatur? Busamus ad molorrum et volupta et hillatiusda volorporepe de adit.

Current Projects

- Sample Farm, National Trust of Australia
- *solar panel installation*
- Jungle Farm, Taiwan National Trust
- *Tree Plantation*
- Castle Farm, National Trust for Scotland
- *Compost utilisation techniques*
- Cocnut Paradise, Fiji National Trust
- *Biofuels*

[About](#)

[Our Farms](#)

[Current Projects](#)

[Contact Us](#)

[Return to Homepage](#)

Sample Farm

National Trust of Australia
Australia

Sample Farm is located in far western New South Wales, and is owned and operated by the Australian National Trust. In this semi-arid region the land is particularly fragile, and as such the sustainability of pastoralism depends



upon careful rangeland management and an extensive understanding of the landscape ecology and livestock requirements.

The property has several areas of historic significance. The ghost town of Taltingan once stood immediately to the west of the Sample Farm boundary, and the town cemetery which holds approximately 60 graves, lies within the

property's boundary. The settlement was founded in 1886, and by 1922 it was largely deserted. Nearby, there is a slabbed well and remains of a Chinese market garden representing an original small-scale horticultural settlement.

Two conservation reserves have been established to protect the endangered tree species, Curly Mallee (Eucalyptus



gillii). The reserves provide the opportunity for the reestablishment of the trees as well as protecting the understory from grazing, hopefully assisting in the recovery of a rare species and enhancing catchment biodiversity.

The property is run using organic principles, which demonstrates its commitment to animal welfare and good land governance. The Dorper sheep, a hardy South African breed, are managed in a low stress and natural environment. Total stock numbers are kept at a conservative level and when seasons are unfavorable

stock numbers are lowered to reduce pressure on natural resources.

In a move to use cleaner energy, Sample Farm will be installing solar panels in the coming year. National Trust volunteer and Sample Farm manger, Mr McDonald, says "we are always looking for ways to embrace greener farming, for the benefit of our livestock, natural ecosystem, and for the future generations."



Farm name:
Sample Farm

Location:
New South
Wales, Australia



Agricultural industry:
Sheep

Sustainability Actions:
Solar panels
Organics
Conservation reserves

National Trust:
National Trust of Australia



Appendix C

Draft email to National Trusts

Dear Sir/Madam,

The International National Trusts Organization (INTO) is undertaking a new and exciting project. INTO members own and manage many rural farming properties across the globe, and wants to bring these farms together, to share knowledge and experience with each other and the wider community. INTO has established a new programme, known as INTO Sustainable Farms, which will be easily accessible from the current INTO website. The site will host farm profiles, which provide past and current information on each farm, as well as future visions and goals.

We invite your National Trust to participate, sharing your knowledge and experience whilst mutually benefiting from the knowledge and experience of other National Trusts across the globe. We ask you to gather information on your farm(s) so that profiles can be created on the INTO website thereby creating a global network.

We would like to hear of the management strategies you are undertaking to ensure a sustainable future on your National Trust farm(s). What are the principles and values you abide by? What development plans are you undertaking and what projects would you like to see in the future?

We would be grateful to receive information on the following:

- History of farm and its heritage significance;
- Natural environment and climate (e.g. flora, fauna, water, and soils);
- Current projects;
- Issues for sustainability;
- Actions for sustainability;
- Cultural heritage structures and collections;
- Traditional knowledge being fostered;
- Vision and goals for the farm;
- Photographs of property (max. 10) including; areas of historic/environmental significance, infrastructure, farm landscape, livestock and/or crops, map of layout, sustainable practices (e.g. solar panels);

For any further information please contact INTO Sustainable Farms project coordinator Anika Molesworth at anika.molesworth@gmail.com.

We look forward to hearing from you shortly!

Kind regards,

Anika Molesworth