



April 2008

Join the International National Trusts Organisation (INTO)

We have already received a number of applications for membership of INTO and we will be writing to these organisations again shortly. If you would like to apply and support the global movement of National Trusts, please [contact us](#).

To contribute to future bulletins, to tell us what you think or to unsubscribe, please contact into@nationaltrust.org.uk.

CONTENTS

INTO NEWS

Message from the INTO Chairman Simon R Molesworth
Meet the Secretariat

NEWS FROM THE TRUSTS

A National Trust for Canada?
The National Trust for Scotland's commemoration and celebrations to mark opening of Culloden centre
An Taisce: The National Trust for Ireland celebrates 60 years

EXCHANGING PRACTICE – WORKSHOPS AND CONFERENCES

2009 International Conference of National Trusts, Dublin, Ireland
Report on the 2007 International Conference of National Trusts, New Delhi, India
Conservation of Art Heritage and Heritage Education Workshop

SHARING IDEAS – COASTLINE ISSUES

Buy Back Bermuda – Bermuda National Trust
National Trust for Jersey's Coastline Campaign
Other National Trust models and approaches

MENTORING, PEER EXCHANGES AND TRAINING

A visit to Japan by Peter Nixon, Director of Conservation, National Trust for England, Wales and Northern Ireland

ADVOCACY, CAMPAIGNS AND ACTION

National Trust for Historic Preservation - Gulf Coast recovery work
National Trust report highlights the importance of land management in addressing climate change and flooding (UK)

RESOURCES AND PUBLICATIONS

Sharing our Stories – A guide to understanding the principles of heritage interpretation, Western Australia
An Taisce: The National Trust for Ireland launches website to help communities and individuals protect and enhance local heritage

INTO NEWS

Message from the INTO Chairman

Welcome to the first edition of the INTO e-bulletin. In the four months since the Delhi Conference I am delighted to be able to report that, thanks to the hard work of our Executive Committee members, the INTO Secretariat is now in place, work has begun on a strategy for the future development of the network and we are building a website which will allow us better communicate, to share information and experience between the international community of National Trusts and provide access to publications and other resources.

We have also invited An Taisce, The National Trust for Ireland, to host the [2009 INTO Conference](#) which will be held in Dublin from [13th – 17th September 2009](#). More details will be available in due course.

INTO has already received a number of applications for membership and we will be writing to these organisations again shortly. If you would still like to apply, please [contact us](#).

A second e-bulletin will be circulated in the summer and in the meantime, the INTO Secretariat is happy to assist with enquiries and requests:



Sword-fighting at Kasteel Ammersoyen, The Gelderland Trust, The Netherlands

- [Do you need expert help in a particular field?](#) We can put you in touch with Trusts with the relevant experience and expertise. Recent requests for assistance have included launching a coastline campaign, establishing a legal framework for a heritage trust, writing a strategic plan and conducting an historic buildings survey.
- [Is your organisation seeking advice on the transition to becoming a National Trust?](#) We can provide useful documentation and models to help your organisation grow.
- [Would you benefit from capacity building support?](#) When funding is available, we can send an expert to provide in-country advice and support.
- [Are you a heritage professional wishing to undertake a secondment to another Trust?](#) We can help arrange exchanges, secondments and projects between different National Trusts to enable professionals and organisations to learn about different approaches to heritage conservation and management.

INTO has access to a large number of specialists engaged in a wide variety of tasks so do come to us with any queries you may have and we will endeavour to find the right person to help.

I look forward to collaborating with you in the future and serving the global family of National Trusts.

Simon R. Molesworth AM, QC
Chair, INTO Executive Committee

Meet the Secretariat ...



Oliver, Catherine (with baby Monty) and Geoffrey meet to discuss the INTO strategy

Since the formal launch of INTO at the International Conference of National Trusts in New Delhi in December of last year, we are pleased to report that our Secretariat personnel is now in place. Oliver Maurice and Geoffrey Read, whom many of you will know, have been appointed as joint voluntary Directors and the INTO, managed by Catherine Leonard, has been established within the London headquarters of the National Trust (England, Wales and NI).

[Oliver Maurice](#) is INTO's Director of Membership Development and Services. He is responsible for 'growing' the National Trust family, assisting existing Trusts to develop their capacity and advising embryonic organisations on the transition to becoming National Trusts. He will be overseeing the provision of services to members.

During a career spanning 32 years with the National Trust for England, Wales and Northern Ireland, Oliver, who was trained as a land agent and chartered surveyor, was responsible for the direct management of many properties and estates, firstly in the Lake District (NW England) and then East Anglia, before being promoted to the Director of the Northumbria Region, a post that he held for 8 years, and finally Director of the NW region for the last 10 years.

Following his retirement in 2002 Oliver became an international heritage consultant, offering advice and assistance to National and Heritage Trusts around the world. In that capacity he has helped to establish the Bali Heritage Trust, has worked with the Sumatra Heritage Trust, the National Trust for New South Wales, the National Trust of Fiji and Din L'Art Helwa (the National Trust for Malta) and the National Trust of Barbados, giving talks, running workshops and, when requested, writing a report with recommendations following the visit. In 2006, Oliver and his wife moved to the south of France.

[Geoffrey Read](#) is INTO's Director of Finance and Infrastructure responsible for developing the capacity of INTO itself. This role involves identifying potential funding sources and securing grants, sponsorship and joint ventures.

Geoff has spent his career working on urban development issues and programmes. He has a background in civil and municipal engineering and, with a smattering of applied economics. Experience working in Europe, Africa and South and East Asia has given the opportunity to be exposed to a broad range of challenges to be dealt with during policy assessment and formulation, development programme design, and physical project management and implementation. His academic background was in civil and municipal engineering, and business administration.

Building on extensive private sector experience, and then some 25 years working in the World Bank Group, much of it in China, he has had the opportunity to be exposed to a wide range of approaches adopted and lessons learned by clients addressing the challenges of urban development, including those specifically exploring the unique role and features of culture and heritage. In China, he has also advised on heritage programs in a number of provinces and several of China's mega-cities.

Having studied languages at university, [Catherine Leonard](#) spent four years developing teaching materials for children, including a year at a primary school on the French island of La Réunion. Catherine then worked for the Foreign Office before joining the National Trust (England, Wales and Northern Ireland) as European and Overseas Co-ordinator in 1999. She left full-time employment with the Trust to run a ski lodge in the Southern Alps and now works two days a week for INTO.

Oliver, Geoff and Catherine would be pleased to hear from you if you have any suggestions or thoughts about INTO and its work, so please [contact us](#).

NEWS FROM THE TRUSTS

[A National Trust for Canada? Visit to Ottawa by Oliver Maurice, INTO Director](#)

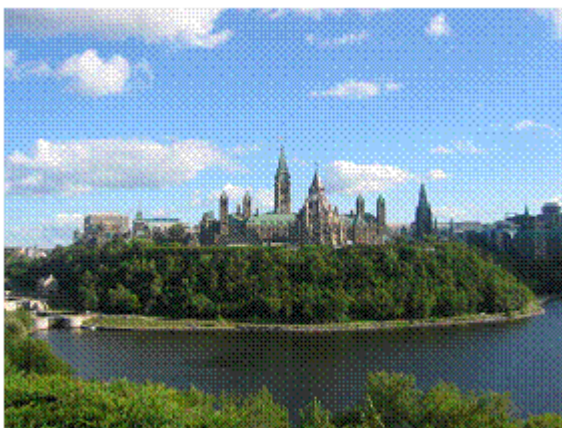
Whilst on holiday in England, I was invited at short notice to give a presentation on the National Trust for England, Wales and Northern Ireland to a round table conference that had been called to consider the establishment of a National Trust for Canada. The Canadian Government had allocated Canadian\$5m towards the setting up of such an organisation and had asked Parks Canada, a government agency, to bring together the various existing heritage bodies and other interested parties to discuss the proposal.

I arrived the night before the conference and at 6:45am the next morning Bill Turner (The Land Conservancy, British Columbia, Canada and member of the INTO Executive Committee) arrived at my hotel room to join in a teleconference 'interview' with the Chairman, Simon Molesworth, in Australia, and the INTO Officer, Catherine Leonard in France. I was the interviewee for the role of

Director of INTO. It turned out to be more of a discussion about the way forward as I had been offered a co-Directorship at the outset, subject to Geoff Read accepting the other co-Director role, which I am very pleased to say he did.



Talking Mountain Ranch, The Land Conservancy, British Columbia, Canada



Canadian Parliament Building, Ottawa

At 8:30 Bill and I were in the Houses of Parliament for the conference after coffee and muffins, provided by our hosts. At 10:30 I was giving my presentation and an hour later David Brown (National Trust for Historic Preservation, USA and INTO Executive Committee member), was on the platform talking about their alternative model.

By mid-morning on the second day conclusions were reached and it was generally felt that a National Trust for Canada should be established rather on the lines of INTO; in other words an umbrella organisation providing a focus on behalf of the heritage institutions of Canada, for advocacy to Parliament and other bodies as well as seeking to achieve similar objectives as INTO but within the country. Watch this space!

Bill Turner and I had a breakfast meeting on the second morning with the Secretary General of ICOMOS, Dinu Bumbaru, also a delegate at the conference representing Heritage Montreal. A useful discussion was had and it was resolved that I should try to make contact with ICOMOS representatives at their head office in Paris when I visit UNESCO in April ...

Call it a baptism of fire!!!

The National Trust for Scotland's commemoration and celebrations to mark opening of Culloden visitor centre

The new Culloden visitor centre, which has been open to the public since December 2007, has its official opening on Wednesday 16th April, the anniversary of the battle.

The Battle of Culloden in 1746 marked the fall of the Jacobite rebellion, which sought to restore the Stuart monarchy to the throne. In barely one hour of fighting, the army of Bonnie Prince Charlie was slaughtered by British Government troops. Over 1,500 people lost their lives.

On 16 April, the visitor centre is open to the public for a series of events including tours of the battlefield highlighting some of the archaeological work which helped rewrite the history of the battle and uncovered some of the valuable artifacts featured in the new exhibition, advice on tracing your family tree, following on from the Trust's popular search to find youngsters with ancestors who fought on either side at the battle of Culloden and living history actors giving an insight into the lives and traditions of people alive at the time.

The Trust's Culloden project co-ordinator, Alexander Bennett said: "We're greatly looking forward to declaring the new visitor centre officially open with a programme of events that aims to tell people more about the battle which changed the course of world history and led to a change in the Highland way of life. The new exhibition aims to offer a new level of understanding of what happened on 16 April 1746, and we look forward to welcoming visitors."



Culloden Visitor Centre, Scotland © NTS

Other events include the memorial cairn being floodlit at dusk for the first time, a lone piper playing laments, a memorial mass and a special Culloden Songs of Praise service. The week of remembrance concludes with a programme of music, sessions with TV history experts, youth events, dancing and live costumed presentations.

The Culloden visitor centre is also in the running for a prestigious RIBA architectural award (Royal Institute of British Architects). Designed by Gareth Hoskins Architects, the £9 million visitor centre is the largest construction project ever undertaken by the National Trust for Scotland. The building places an emphasis on environmentally friendly features, using sustainably sourced timber and Caithness stone. Heating is provided by a woodchip burning biomass boiler plant.

An Taisce: The National Trust for Ireland celebrates 60 years

An Taisce (Irish for 'The Storehouse' or 'Treasury'), also known as the National Trust for Ireland, was established in 1948 with a similar mission to that of the National Trust in England, Wales and Northern Ireland, and is today the most influential environmental body in the Republic of Ireland. An Taisce will be celebrating its 60th anniversary on 28 June 2008. A number of celebrations are being planned throughout the year, including a service and reception on 5 October and culminating with the INTO Conference.

Any colleagues from National Trusts around the world visiting Ireland or the region at this time would be very welcome to come to these events. Please contact [John Ducie](#) from An Taisce for more information.

EXCHANGING PRACTICE – WORKSHOPS AND CONFERENCES

2009 International Conference of National Trusts, Dublin, Ireland

We are delighted to announce the dates of the 2009 INTO Conference. Hosted by An Taisce, The National Trust for Ireland, the Conference will take place in Dublin from Sunday 13th – Thursday 17th September 2009. Sunday will be arrivals and registration followed by a welcome reception. Monday, Tuesday and Wednesday will be working sessions in Dublin Castle, interspersed with local site visits. The Conference will close formally on Thursday when delegates will have the option to enjoy longer site visits/trips.



Dublin Castle – Venue of INTO Conference 2009, Ireland

More information will be available shortly but if you would like to register an interest in attending or addressing the conference, please [contact us](#).

Report on the 2007 International Conference of National Trusts, New Delhi, India

The 12th International Conference of National Trusts, hosted by INTACH in New Delhi from 3rd to 5th December 2007, explored the theme of 'Heritage and Development'. Over 300 participants from 49 countries represented National Trusts and similar organisations from almost every part of the world.

The relationship between heritage conservation and economic development is clear and in healthy societies, cultural heritage provides a base for economic progress and a source of both meaning and identity. As the forces of globalisation rapidly increase, the development of mechanisms for the protection of heritage becomes increasingly urgent, especially in developing nations that are strongly affected by the impact of globalisation.



Members of the INTO Steering Committee address the first plenary session of the Conference

National Trusts (and similar heritage organisations), as membership organisations, are the voice of civil society. The Delhi conference included delegates from a broad range of countries and regions, many of whom were participating for the first time. The goal was to provide an international forum for discussion, debate, and exchange of ideas and experiences, as well as an opportunity for the development of networks and partnerships.

An extremely significant result of the Conference was the launch of INTO, the International National Trusts Organisation. The INTO Charter was signed by members of the Steering Committee, who had brought the Charter into being, as well as 35 other signatories who were present.

The conference was inaugurated on 3rd December by Dr. Manmohan Singh, the Prime Minister of India, and Smt. Ambika Soni, Minister of Tourism and Culture. INTO was formally launched later on the same day by

Professor Hamid Ansari, the Vice President of India. The Conference was closed on 5th December 2007 by Smt. Sheila Dikshit, Chief Minister of Delhi, and Dr. Karan Singh, Chairman of the Indian Council for Cultural Relations.

For more information about the conference, please see the [INTACH website](#).

Conservation of Art Heritage and Heritage Education Workshop

Following on from the achievements of the 12th ICNT in New Delhi in December 2007 and the recommendations emerging from the Conference, INTACH are now organising a smaller Conference aimed at Asian participation which will focus on two specific areas – Conservation of Art Heritage and Heritage Education. Accordingly, it will be named Asian Regional Cooperation in Heritage Conservation of Art Heritage & Heritage Education, and will be held in New Delhi from 2nd to the 4th December 2008.

The choice of subject areas as well as the geographical range of invited countries has been determined by several factors. These include the richness and variety of Asian art and natural heritage; the historic and cultural linkages within the region leading to shared traditions; and the many traditional conservation and education methods across the continent, part of the intangible heritage of Asia, some parts of which are alive even today.

INTACH are seeking to invite experts in these fields to participate in two simultaneous panel sessions, one of which will deal with conservation (including of varied materials such as wood, metal, stone, painting, etc) and the other with heritage education.

The idea is to enable meetings, networking, building partnerships and the exchange of ideas and best practices towards creating an Asian regional platform for conservators, archaeologists, museum persons, artists, educationists and teachers. The goal is that of developing strategies based on Asian regional cooperation, much-needed in the context of heritage conservation and education.

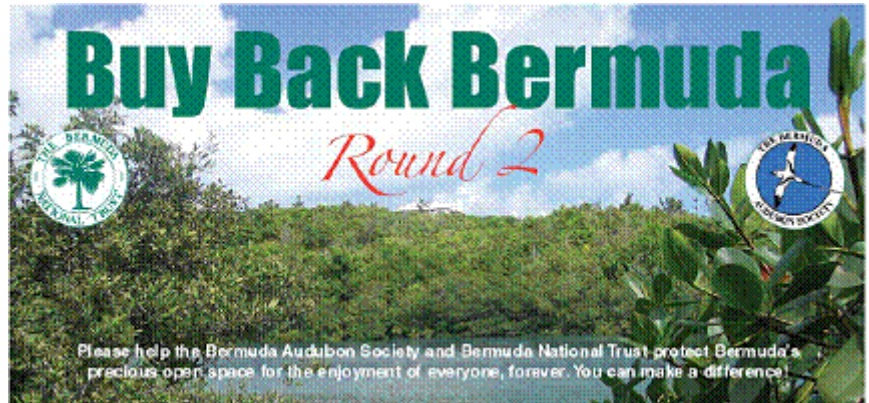
Please contact [AshaRani Mathur](#) at INTACH for further information.

SHARING IDEAS – COASTLINE ISSUES

Fundraising for acquisitions: Buy Back Bermuda Round 2

Three years ago, the Bermuda National Trust launched its first 'Buy Back Bermuda' campaign. Building on the public support this raised, they are now looking to save more green space from development in partnership with The Bermuda Audubon Society.

The target this time is \$2.5 million and two valuable properties have been identified – the first in Southampton, 7.6 acres next to Evans Bay Pond, and the second, 3.36 acres in Hamilton Parish, near Shelly Bay – almost 11 acres in total. The partners are now inviting supporters to contribute to the fund and help 'save some open green space' for current and future to enjoy. It is hoped that all concerned – residents, young and old, local and international companies and even visitors – will help with this Second Campaign by making a financial contribution to this cause and all donors will have their names recorded for prosperity on a monument to be constructed on the sites for all to see.



To find out more about the campaign, please visit the [Bermuda National Trust website](#).

National Trust for Jersey's Coastline Campaign

Despite improved planning control the coastline of Jersey is still vulnerable to inappropriate and creeping development. Areas of the south-east coast perfectly illustrate how the natural beauty of Jersey can be irrevocably damaged and new town planning proposals reflect the increasing pressures faced by the coastline.



Piémont Bay, Jersey

Extended mineral extraction has led to the permanent loss of valuable duneland and potentially threatens the island's unique geological heritage along the north coast. Poorly sited leisure facilities and noisy recreational activities continue to erode the sense of tranquillity and remoteness which once pervaded the coast, and now new telecoms masts could result in further damage to the landscape.

To a large extent the ability of Jersey's coastline to sustain all these pressures will depend on how it is protected and managed. With government policy subject to economic pressures, the National Trust for Jersey has a crucial role to play and has launched a Coastline Campaign with the aim of a

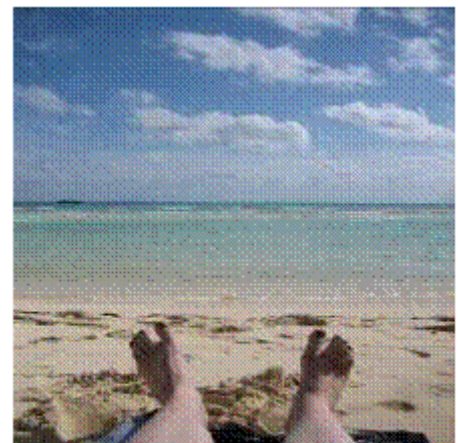
fund to acquire further areas of coastline for permanent preservation and public access, to encourage flora and fauna through a programme of coastline management and to bring to public attention the continuing threats to the natural beauty, wilderness and heritage of the coastline.

The National Trust for Jersey has a website dedicated to the coast www.coast.je with a distinctive interactive [Rockpool Rambles](#) area which allows visitors to explore coastal sites and to learn about their unique marine environment.

Other National Trust models and approaches

Many National Trusts or like organisations are involved in coastline issues in some way:

- **Awards:** The Blue Flag Programme is one of the most widely known, most recognised and valued ecolabels throughout Europe and beyond. It is awarded to beaches and marinas with excellent environmental management. An Taisce: The National Trust for Ireland is the national operator for the International Blue Flag Campaign in Ireland. [Find out more about An Taisce's work with the Blue Flag Campaign here.](#)
- **Campaigns:** Din l'Art Helwa (The National Trust of Malta) has been running a campaign to save Ta' Cenc in Gozo, a beautiful coastal area and one of the few remaining tracts of open countryside left in the Maltese Islands. An area of outstanding scenic beauty, it is also a vital habitat for dwindling communities of rare plants and animals. [Find out more about the campaign to Save Ta' Cenc here.](#)



Lucayan National Park, Bahamas

- **Management:** The Bahamas National Trust is mandated with the development and management of the National Park System of The Bahamas. The parks contain many unique features, critical habitats and endangered species. Bahamian Parks are treasure-troves of biodiversity as well as areas of pure aesthetic beauty. The system protects the world's largest breeding colony of West Indian Flamingos, one of the world's longest underwater cave systems, a critically important sea turtle research facility and one of the most successful marine fishery reserves in the Wider Caribbean. In 2002 the National Park System of The Bahamas was doubled in size, an unprecedented accomplishment in protected area history. Ten new National Parks were created, protecting both marine and terrestrial territories, bringing the total acreage of the national system to more than 700,000. [Find out more about the National Parks of The Bahamas here.](#)

MENTORING, PEER EXCHANGES AND TRAINING

A visit to Japan by Peter Nixon, Director of Conservation, National Trust for England, Wales and Northern Ireland

Peter spent a week with the Association of National Trusts in Japan (ANTJ), spoke at their AGM and advised on organisational and conservation issues. This is an abridged version of his report.

The [ANTJ](#) is a loose organisation of about 50 individual conservation groups, locally based and managed. Their 23rd Annual Conference and AGM was held in October 2005 in Iida City, in the Nagano Prefecture, which lies about 180 km north east of Tokyo on the main island of Honshu.

I spent the first three days in Tokyo, where I met ANTJ's executive staff (around 30), their President, Kazuo Aichi, who is a Member of the Diet (Parliament), and various Trustees. I also had a meeting with the Minister of the Environment, Koike Yuriko, who was previously a TV presenter/anchor for Japan's premier current affairs/news programme. We discussed common issues of concern, resource management, especially water and soils, climate change and sustaining rural communities. She seemed genuinely interested in NT (UK) experience. I stressed the economic benefits that accrue from good environmental and heritage management ([Valuing our Environment](#)) and we discussed tax concessions at some length.



Installing bark protection, Shiretoko Vo lunteer Program, Japan

A four hour bus ride from Tokyo to the Nagano area highlighted the enormous development pressure on land. The interior of Japan is dominated by steep hills and mountains, restricting land for settlement, development and arable cultivation. Flat land is at an absolute premium. Hence Tokyo in a key trading position on the Pacific coast is unbelievably developed – with the highest land prices in the world.

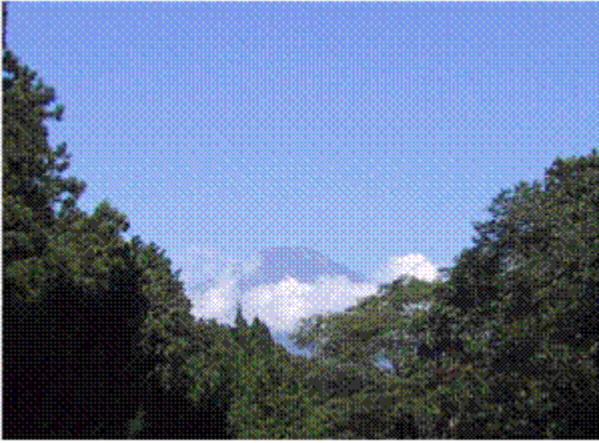
I saw not a single livestock animal throughout the whole visit, only intensively cultivated tiny plots of land providing a wide range of produce as well as rice paddies. There are livestock, but far away in the hills – which are predominately forested with plantation conifers. The climate is on the sub-tropical end of temperate, with heavy rainfall which combined with very steep slopes has resulted in major soil erosion.

At the AGM in Iida, I gave a presentation about the UK National Trust, with a particular emphasis on the importance of inalienability, tax breaks, membership support and engagement, and conservation issues. During the AGM and conference three key conservation concerns emerged:

- The threat to historic buildings and settlements from rural depopulation (and declining birth rate)
- The threat to biodiversity from alien species
- The threat to biodiversity from unsustainable development

I described our experience of trying to tackle these, stressing the importance of distinguishing between sustainable and unsustainable development, rather than assuming blanket opposition to all development and gave examples of how our Trust acts as a 'developer', which was of great interest.

Because of the climate in Japan and the construction of most of the rural historic buildings in timber and ephemeral materials, their conservation is very dependent on the continuing occupation of the buildings. High humidity plus rapacious insects require constant attention and particularly the protection provided by regular open fires (supplying heat and tar) in dwellings. We visited a deserted settlement in the hills above Iida, where the local NT group is restoring the whole village for the use of eco-tourists.



Mt Fuji, The Association of National Trusts in Japan

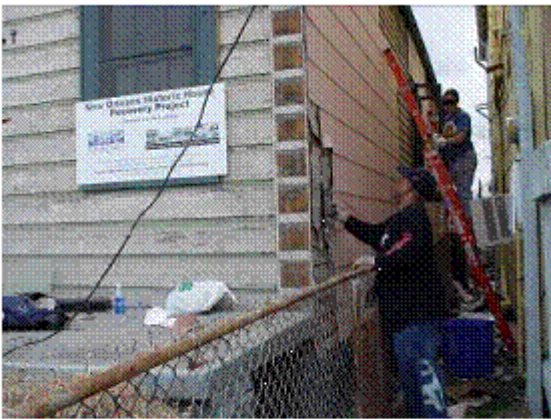
The conclusion I drew for ANTJ, based on our experience, is that they could be at a turning point in their history. They can either continue as a loose organisation of independent bodies, and almost certainly struggle to get Government recognition. Or they can unite within a single framework and constitution, in which case they could have the critical mass to attract a much greater membership and income base, and have the credibility for their Government to entrust inalienable status and tax concessions to them, on a consistent, nation-wide basis.

With a population twice the size of the UKs, a land mass of similar size, fabulously important sites of environmental and historic value, and very real and fundraisable threats, they have all the ingredients for spectacular growth and the opportunity to make a very real difference to the future of Japan's heritage.

[Please contact us for a full copy of Peter's report.](#)

ADVOCACY, CAMPAIGNS AND ACTION

National Trust for Historic Preservation - Gulf Coast recovery work



*New Orleans, Louisiana HOME AGAIN! Program
(Mary Fitzpatrick, PRC)*

For most of us the events associated with Hurricane Katrina are memory. For hundreds of thousands people on the Gulf Coast they are a daily fact of life as they travel the long road to recovery. The National Trust for Historic Preservation continues to work diligently with partners in Louisiana and Mississippi to protect and enhance the special character of the places these people enjoy.

In New Orleans the NTHP maintains a Field Office that provides on the ground leadership and advocacy to protect buildings from unnecessary demolition, monitors governmental agencies for compliance with preservation laws, proposes policies that help owners of historic properties in their recovery efforts and helps coordinate the dizzying array of preservation activities throughout the city.

The NTHP also operates the HOME AGAIN! program out of the New Orleans Field Office. HOME AGAIN! provides direct technical assistance and funding to low and moderate income owners of historic properties. Since late 2005 11 different families have been helped to reclaim their homes and restart their lives. [You can find some of their stories here.](#)

Likewise, in Mississippi the National Trust for Historic Preservation is working with partners, the Mississippi Heritage Trust and the Mississippi Department of Archives and History to save those important remaining historic places on Mississippi's Gulf Coast.

The National Trust for Historic Preservation is committed to playing an active role in responding to catastrophic national disasters. It is dedicated to assisting affected neighborhoods in rebuilding and stabilizing cultural resources and older and historic communities and support full compliance with Section 106 review under the National Historic Preservation Act in the aftermath of any natural or man-made disaster - particularly in the distribution of Federal disaster aid in the form of grants, loans, tax credits and any in-kind contributions, which may also be provided in match from States and localities to affected citizens.

Find out more about the National Trust for Historic Preservation's Gulf Coast recovery work on their [website](#).

National Trust report highlights importance of land management in addressing climate change and flooding

A new report published by the National Trust for England, Wales and Northern Ireland – [Nature's Capital](#) – urges the public and private sector to invest new money in helping to deliver major public benefits from land, including reduced risk of flooding and tackling climate change.

Recommendations in the report are based on the Trust's own practical experience as the largest non-governmental landowner in the UK, managing over 250,000 hectares. Investment now will save public money later in tackling the problems of climate change, flooding, water pollution and poor health.

The report contains four key recommendations for action:

- The water industry should invest in land management to improve the quality of drinking water at source
- More of the Government's £800m flood risk budget should be spent on managing land in a way that makes space for water rather than just spending the money on hard engineering and flood defence
- Extend the use of carbon markets to provide financial incentives for investment in land based carbon, such as peat bogs, to reduce losses of carbon from soil
- There is a need for more healthcare funding to be allocated for green exercise prescriptions in the outdoors

Tony Burton, Director of Strategy and External Affairs at the National Trust, said: 'With a changing climate and rising demands for new built development, the pressure on land is increasing. We need to harness new sources of investment and new partnerships to realise the potential of our land to help tackle flooding, climate change and the supply of clean water and green spaces for the benefit of us all.'

RESOURCES AND PUBLICATIONS

Sharing our Stories

Produced by the National Trust of Western Australia and Museums Australia in partnership with Lottery West, this publication aims to provide guidelines for community groups, local councils, government agencies and funding bodies in understanding the principles of heritage interpretation and the role it plays in community development. It includes sections on the processes of heritage interpretation, the production of heritage policies, strategies and projects, writing applications for grant funding to pay for the costs of skilled assistance and production.



No 1 Pumping Station at Mundaring Weir on the Golden Pipeline, National Trust of Western Australia

If you manage a community museum or heritage site this booklet is for you. It will help you develop a clear vision and provides a series of steps to follow in undertaking a heritage plan or project whether you choose to employ expert help or volunteers undertake the work.

The guidelines are designed to develop in paid and volunteer workers a professional approach to the process, empower volunteer steering groups to better select and brief suitable consultants, assist volunteer interpreters in providing enhanced services for their audiences, assist consultants in providing better services to their clients, inform government officers about the principles and processes of heritage interpretation so that enhanced support can be offered to council and community initiatives.

It is recognised that different heritage organizations have diverse levels of competence and an attempt has been made to provide a holistic outline that will be useful on a number of levels. It is important to address the different aspects of an interpretation plan or project in logical sequence. You cannot produce an interpretation project until you have developed your concept plan, prepared a design brief and drafted the text. This document provides a structure and a sequence for developing interpretation.

To find out more, visit the [website](#) of the National Trust of Western Australia.

An Taisce: The National Trust for Ireland launches website to help communities and individuals protect and enhance local heritage

At the beginning of the year, An Taisce launched www.heritageknowhow.ie, an innovative and accessible toolkit to help individuals and communities to protect and enhance their local heritage. The site provides answers to many commonly asked questions about Ireland's environment and heritage. It offers helpful hints and practical advice to all interested in conservation in the community.

Launching the website, President of An Taisce and well known wildlife broadcaster Eanna Ní Lamhna said: "We all want to save the world, and now, instead of complaining about what "they" are doing, we can at least start in our own community, with the help of this website"

"By logging on to www.heritageknowhow.ie you can learn how to take action, get involved, and make a difference - Quick - while there is still something there to protect! "



Ballinahown School receiving a Green Flag from An Taisce, Republic of Ireland

The Toolkit covers a wide range of heritage topics, including built and natural heritage; giving practical guidance and links such as planting trees and hedges, collecting seeds, and making a wildlife pond, and finding out about protected sites, through to how to participate in drafting County Development plans, getting a building or monument listed, tree protection orders, and reporting incidents of concern in your area.

“Everything you need to know is at www.heritageknowhow.ie, so log on now and see what you can do!”

We welcome your feedback! To submit comments or suggestions, receive a text-only version, or update your e-mail address, please contact into@nationaltrust.org.uk.