



# THE BERMUDA NATIONAL TRUST EDUCATION PROGRAMME

## *'Three-Part Learning' with Engaging Field Trips*

*The Bermuda National Trust Education Programme offers 'Three-Part Learning' experiences that complement field trips to Trust nature reserves and historic properties and link directly to the Cambridge National Curriculum and the Ministry of Education Social Studies Curriculum. Field trips and activities are provided for all grade levels. When scheduling a field trip, teachers can request to have a National Trust educator provide an introductory presentation and a follow-up activity for students in their classroom.*



### **SOCIAL STUDIES ...**

**Verdmont Historic House and Garden, Smith's**  
Discover life in the 18th century: artefacts, period furniture and clothing, toys and games children played and Bermudian architecture.

**Historic Tucker House, St. George's**  
Learn about archaeology, 18th century period furniture and kitchen tools, the Tucker family and the historic 'Gun Powder Plot'.

**The Bermuda National Trust at the Globe Hotel, St. George's**  
Explore the 'Rogues & Runners' exhibit showing Bermuda's involvement in the American Civil War and how the sleepy town of St. George's was changed during this period.

**Waterville, Historic House & Gardens, Paget**  
Visit this beautiful home and site of the first Trimmingham store. See 18th century period furniture and enjoy a garden scavenger hunt.

**St. George's Activities**  
Select from a choice of 'Old Town' experiences such as a walking tour of select building, a scavenger hunt in the town, or a focus on Bermudian architecture.

### **SCIENCE & THE ENVIRONMENT ...**

**Paget Marsh Nature Reserve, Paget**  
Experience early Bermuda before development began while walking along the boardwalk through various habitats, viewing plants and animals, learning about the formation of Paget Marsh, how caves are formed and conservation efforts.

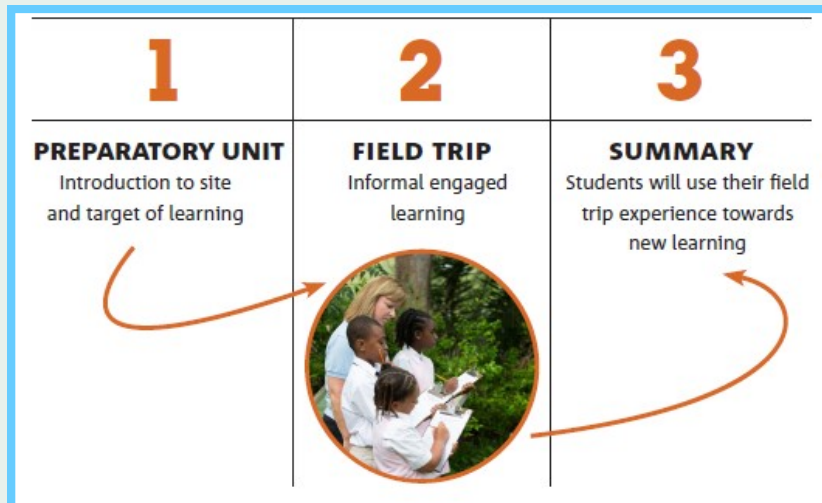
**Spittal Pond Nature Reserve, Smith's**  
Walk the trails through a variety of habitats, viewing bird life, plants and animals. Learn about food chains and conservation efforts.

**Somerset Long Bay Nature Reserve, Somerset**  
View bird life, plants and animals. and learn about conservation efforts at this 'Buy Back Bermuda' site.

**Vesey Nature Reserve, Southampton**  
Learn about inland and coastal limestone quarrying of long ago and walk the pathways to enjoy the view of the Great Sound.



# Three-Part Learning with Engaging Field Trips ...



## Preparatory Unit

A brief presentation about the site is shown to students, which builds anticipation for their field trip. A National Trust educator gauges students' learning styles and prior knowledge, while encouraging them to think of additional information they would like to learn during their trip.

## Field Trip

Field trips are provided for all grade levels and includes specific curriculum areas requested by teachers. Knowledge from the prior introduction increases student engagement and their ability to retain information.

## Summary

During the classroom follow-up approximately a week after the field trip, students are encouraged to participate in an activity which is delivered in a fun and engaging presentation.



*"All of the activities were very much age appropriate. Breaking the lessons up into three parts provided students with an anticipatory set that prepared them for what they would see and do whilst out on the site visit. Students were ready to engage in the field trip in a more organized and meaningful way. The follow up lesson, review and activity also provided additional time to review content vocabulary, recall and identify plants and animals seen and solidify all that was learned."*

Prospect Primary Teacher

*"I really enjoyed this field trip and found that it linked nicely with our unit. Being able to tour the inside of Waterville was extremely beneficial as we aren't able to provide students with this experience at school. We show artefacts, but it is nice for the children to see it all come together. It was very interesting as several pieces and their background were pointed out: the Grandfather clock, paintings on the wall and seeing period clothing."*

Warwick Academy Teacher

## Scheduling Field Trip Experiences ...

To schedule our 'Three-Part Learning' in combination with a Bermuda National Trust field trip to a nature reserve or historic property, email our education team at [education@bnt.bm](mailto:education@bnt.bm) or visit [www.bnt.bm](http://www.bnt.bm) and download our [School Field Trip Booking form](#) listed on the school field trips page.

**\*Stand alone field trips may be scheduled if time does not allow for our introduction and follow up experiences.**

## Teacher Field Trip Presentations...

A member of our education team is available to provide a brief presentation during staff meetings to review the field trip sites and address questions.



Please call 236-6483 for additional information, or email [education@bnt.bm](mailto:education@bnt.bm)

